

SUPER II® V-BELT

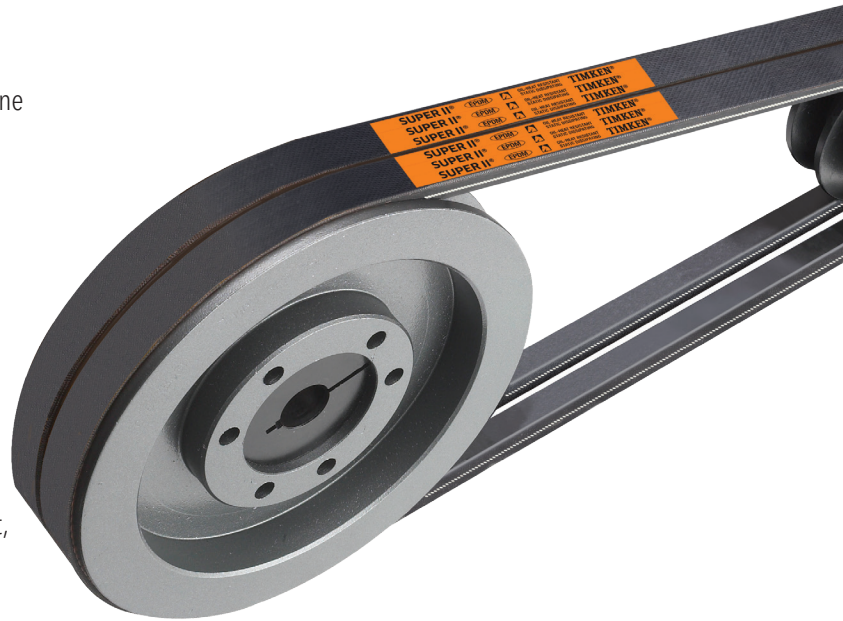
Belts that work as hard as you do.



The Problem Solver!

Super II® is a classical raw edge v-belt made of Ethylene Propylene Diene Monomer (EPDM) with a central neutral axis (CNA) cord placement that creates a flexible, stable and efficient belt. This rugged belt is specifically designed to provide superior performance on the most brutal drives – the kind of drives that devour ordinary wrapped belts.

Timken® Super II v-belts offer greater strength, longer life and better heat dissipation than ordinary wrapped belts. The secret to Super II belts is the unique construction and innovative design features that eliminate many problems common to wrapped v-belts. Super II belts are durable and resistant to heat, with a broad operating temperature range of -50°F to +250°F.

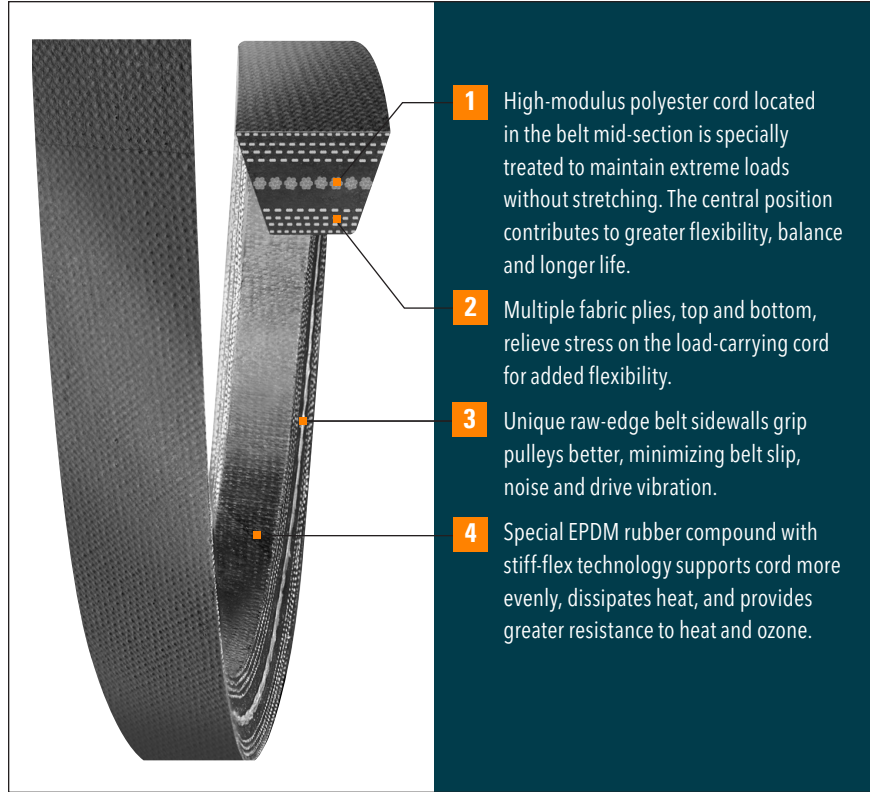


SUPER II V-BELT

Help reduce downtime with EPDM Super II v-belts, the right belt for the job!

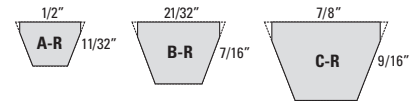
Features and Advantages:

- Specially formulated fiber-loaded EPDM rubber compound resists heat, hardening and glazing
- Treated high-modulus polyester cord provides strength and stretch resistance
- CNA cord placement positions the strength of the belt lower on the pulleys to maintain flexibility and stability
- Stiff-flex technology allows cord support in the v-groove of the pulley while being flexible around the radius of the pulley
- Engineered fabrics relieve stress
- More energy efficient than wrapped belts
- Static conductive
- Excellent for use on backside idler drives
- Broad operating temperature range (-50°F to +250°F)
- Built to Chek Mate® tolerances for a matched set
- Raw edge sidewalls minimize belt slip and reduce vibration for extended component life



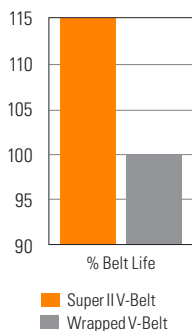
Applications: Shaker screens, debarkers, industrial washers and dryers, and more.

Sizes: A-R, B-R and C-R cross-sections from 17" to 144".

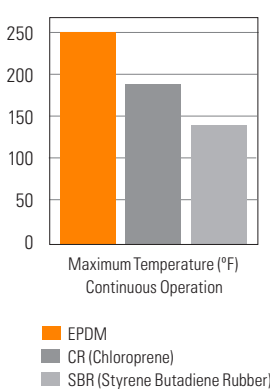


Lab and field tests prove that Super II v-belts are superior to ordinary wrapped belts:

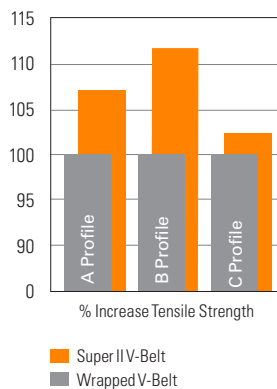
Belt Life



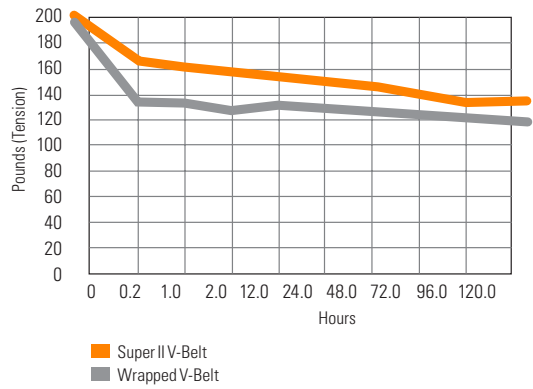
Operating Temperature



Tensile Strength



Tension Decay (Stretch Resistance)



TIMKEN BELTS

Timken® belts are part of The Timken Company's growing portfolio of engineered bearings and industrial motion products. Timken Belts manufactures premium-performance power transmission belts that help keep industry in motion and the world more productive.

www.timkenbelts.com